



**THE BRIGHT  
FOUNDATION**

**Barn Theatre Tech Spec**



## CAPACITY

55 total

- 48 downstairs
- 7 on mezzanine

## SEATING

- 20 fixed theatre style seats in 3 rows
- 28 sat on floor cushions or mobile benches
- 7 on mezzanine bench

## DIMENSIONS

- Stage: 5.5m wide x 3.75m deep (3m wide with tabs in)
- Open workshop space / floor seating: 5.5m x 6.25m (34m<sup>2</sup>)
- Entire room: 5.5m x 12.25m (67m<sup>2</sup>)

## STAGING

- 6 removable stage sections (2.1m x 0.5m) that become bench seating
- Underneath removable stage sections is a pit suitable for puppetry shows
- Two moveable tabs (1.25m wide) stage left and stage right to create wings
- Black painted wooden stage with optional vinyl dance floor to cover
- Shadow puppet moveable screen

## BACKSTAGE

- Backstage room on stage right (4m x 1.8m) with curtain entrance to stage
- Please note we have no dressing rooms but do have a private staff toilet

## PARKING AND LOADING

- Onsite parking
- Loading area direct from car parking to theatre



## LIGHTING

### Control:

FLX 24 Channel Lighting Desk

### Rigging:

4 x 6Way Internally Wired bars. (Each outlet with Powercon and DMX XLR-5F connectors)

### Lanterns:

10 x Motorised Wash Lights

4 x Zoom RGB Profile Spot lights



## SOUND AND VIDEO

### Mixer / Playback:

Portable Playback rack with lift off lid inc

- Rack mounted mixer – 6 XLR inputs – 3 Stereo inputs – 3 Outputs (2no. XLR L/R and 1 mono 6.3mm Jack)
- CD / Bluetooth Playback unit
- 2 x Handheld radio mics

### Speakers:

2 x 12” RCF self powered speakers

### Projection:

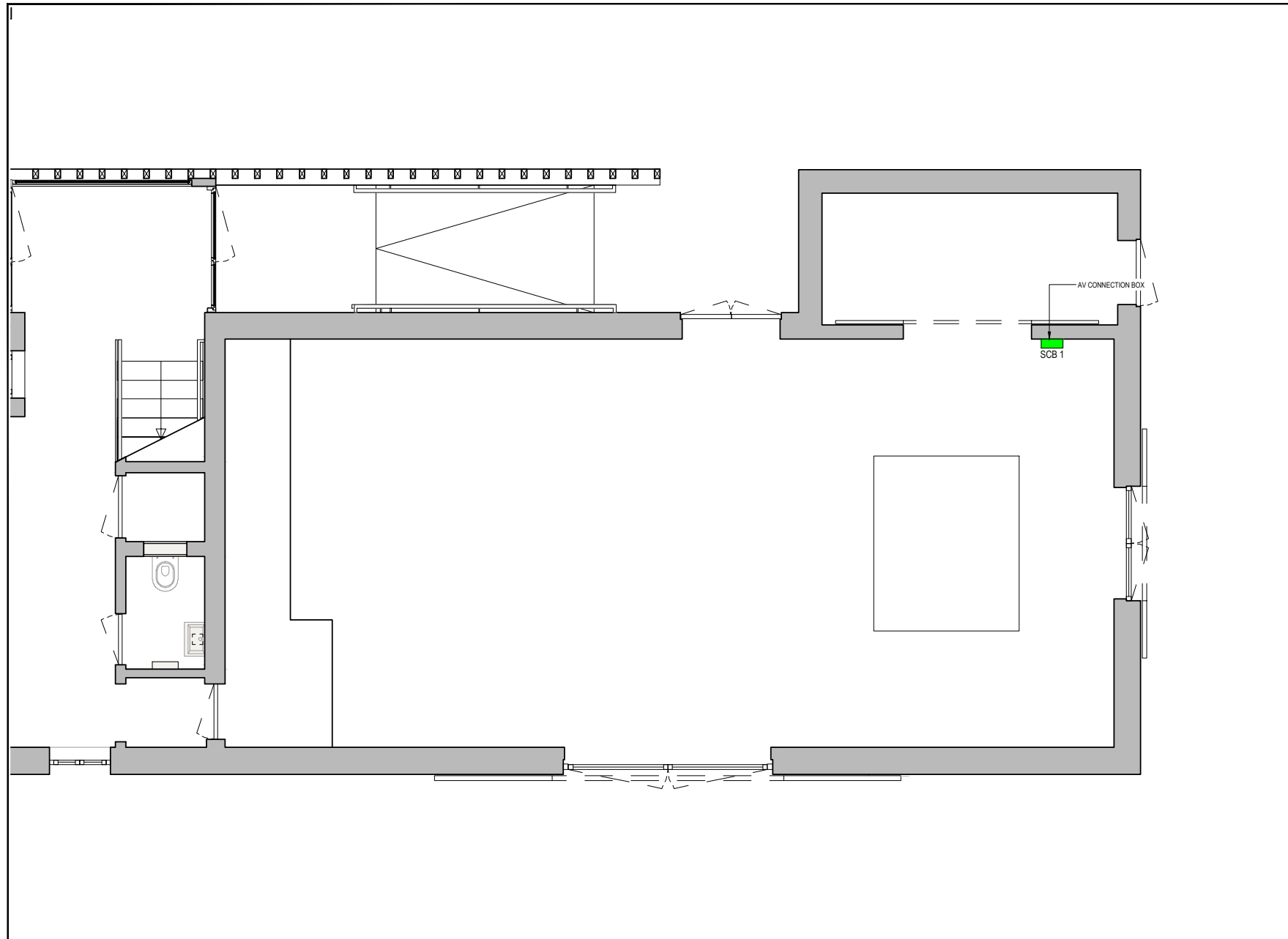
6000 Lumens – Laser projector (Christie DWU760A-iS)

Motorised Front projection screen – 16:9 Aspect Ratio – 366x206 viewing area

### Notes:

The Lighting and Audio/Visual system is designed around the use of energy efficient LED Luminaires and Powered Speakers. The supply for the whole system is therefore from a single 32A Supply.

NOTES:



AB01	11.07.2022	AS BUILT ISSUE	K.SAMPHER
CD1	13.06.2022	CONSTRUCTION ISSUE	K.SAMPHER
PD1	08.04.2022	INITIAL ISSUE	K.SAMPHER
Rev	Date	Comments	Operator

REVISION

AS FITTED

CLIENT  
BRIGHT FOUNDATION

PROJECT  
RODGERS FARM STAGE  
LIGHTING & AV FIT OUT

LOCATION  
HASTINGS

TITLE  
THEATRE GROUND FLOOR  
LAYOUT

DRAWN  
K.SAMPHER

ORIGINATOR  
K.SAMPHER

CREATION DATE  
08.04.2022

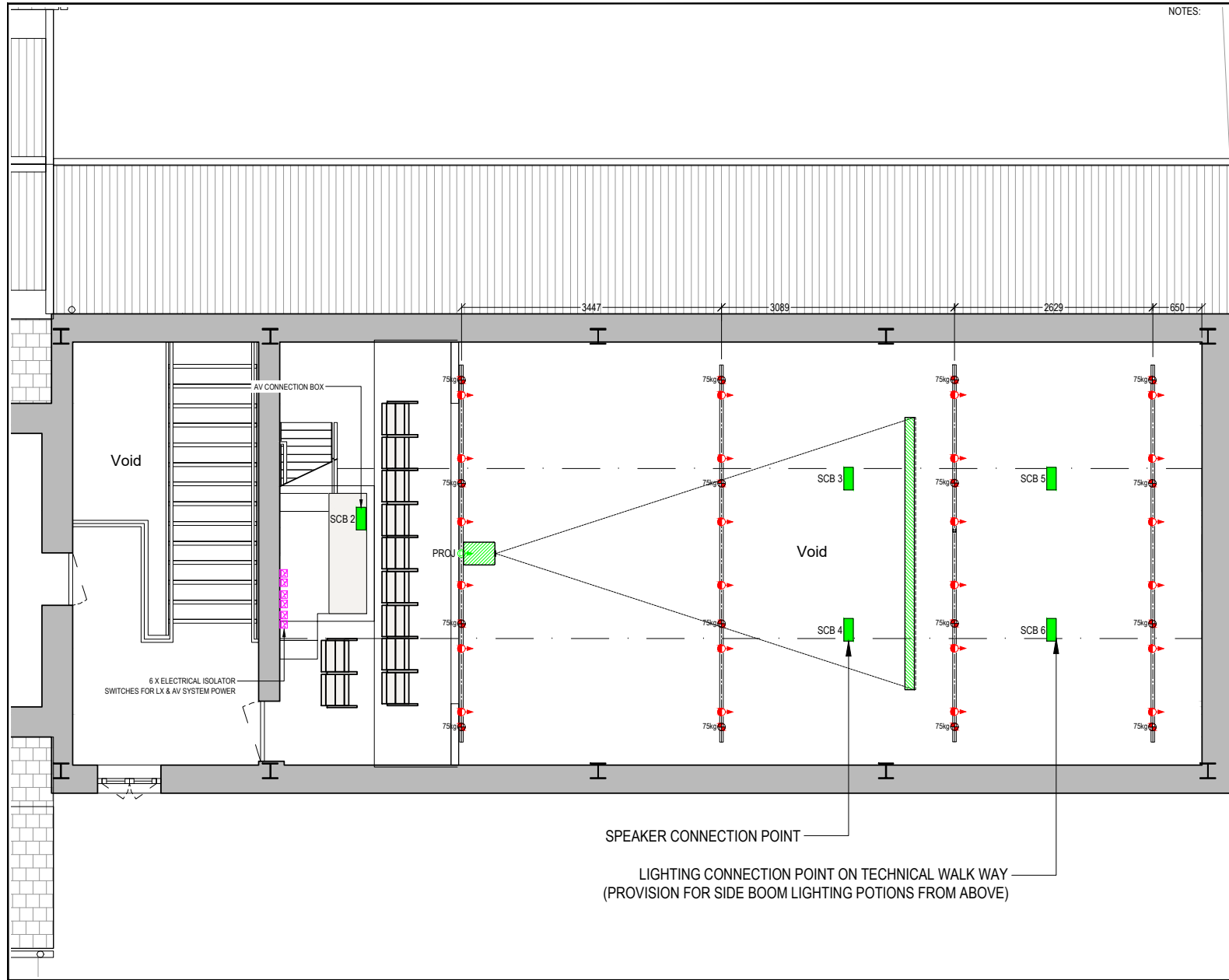
SCALE  
1:50

PROJECT NO.  
20838-SE-101-1001 -00


SHEET NO.  
AB01



STAGE ELECTRICS LTD  
110-112, BRISTOL ROAD, HASTINGS, SUSSEX, TN37 7YU  
Tel: +44 (0)1773 532 4000  
www.stage-electrics.co.uk



NOTES:

<b>DO NOT SCALE</b>		SHEET NO. <b>A3</b>
KEYPLAN		↑ N
		
DRAWING REFERENCES		
Orig No.	Rev	Title
1234-5678-9012	1	GRID
LEGEND		

Rev	Date	Comments	Operator
AB01	11.07.2022	AS BUILT ISSUE	K. SAMPHER
CD1	13.05.2022	CONSTRUCTION ISSUE	K. SAMPHER
PD1	10.04.2022	INITIAL ISSUE	K. SAMPHER

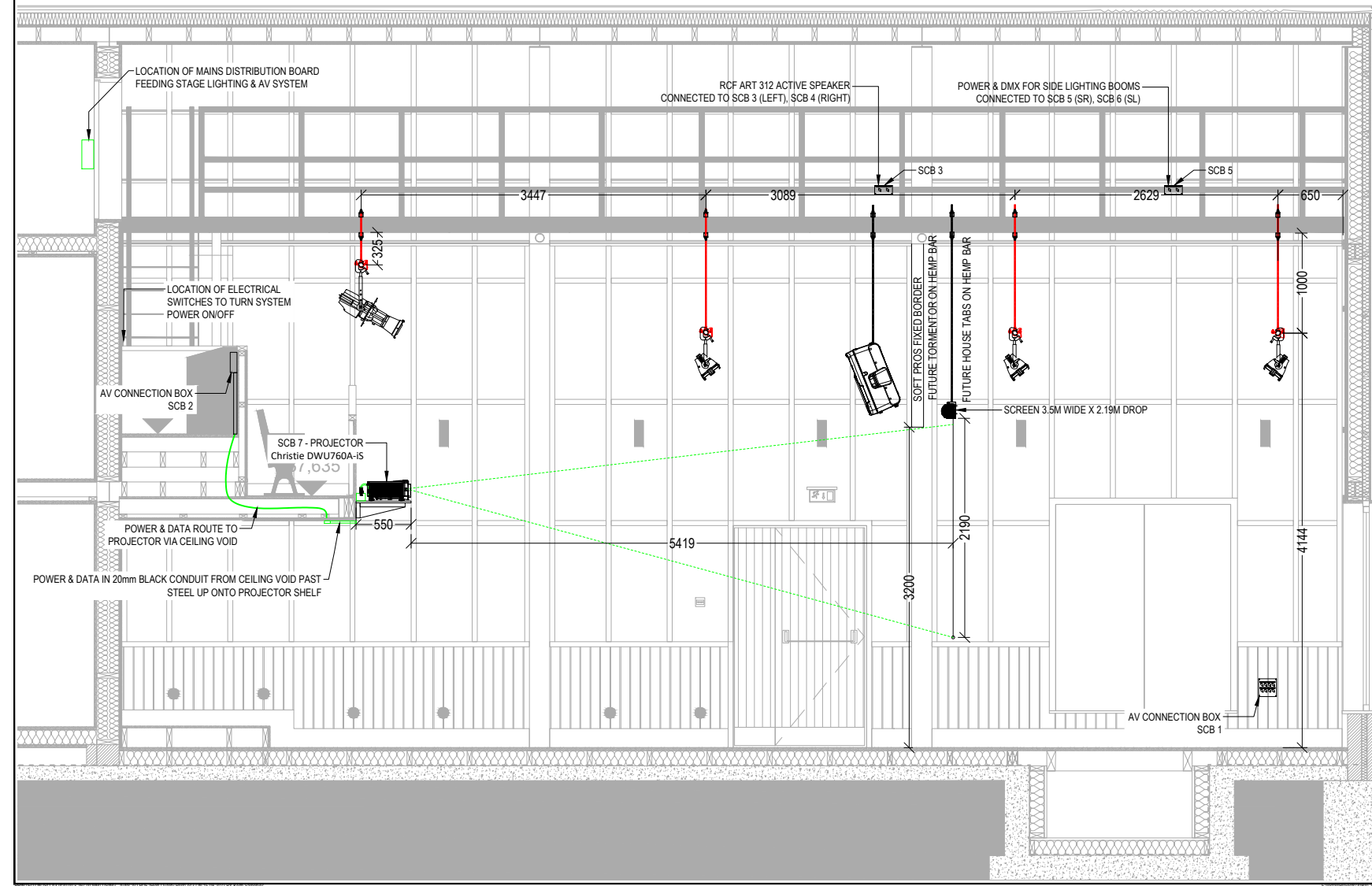
**REVISION**

DRAWING STATUS	<b>AS FITTED</b>
CLIENT	BRIGHT FOUNDATION
PROJECT	RODGERS FARM STAGE LIGHTING & AV FIT OUT
LOCATION	HASTINGS
TITLE	THEATRE FIRST FLOOR LAYOUT
DRAWN	K. SAMPHER
ORGANISER	K. SAMPHER
CREATED/ISSUED	10.04.2022
SCALE	1:50
PROJECT NO.	20838-SE-101-1101-00
FILE NO.	AB01

**STAGE ELECTRICS**

Encore House, Unit 3, Enterprise Road, Patchway, Bristol, BS34 5TA  
 Tel: +44 (0)117 258 4000  
 Copyright 2022 Stage Electrics. All rights reserved. This work may not be further distributed without written permission from Stage Electrics.  
[www.stage-electrics.co.uk](http://www.stage-electrics.co.uk)

NOTES:

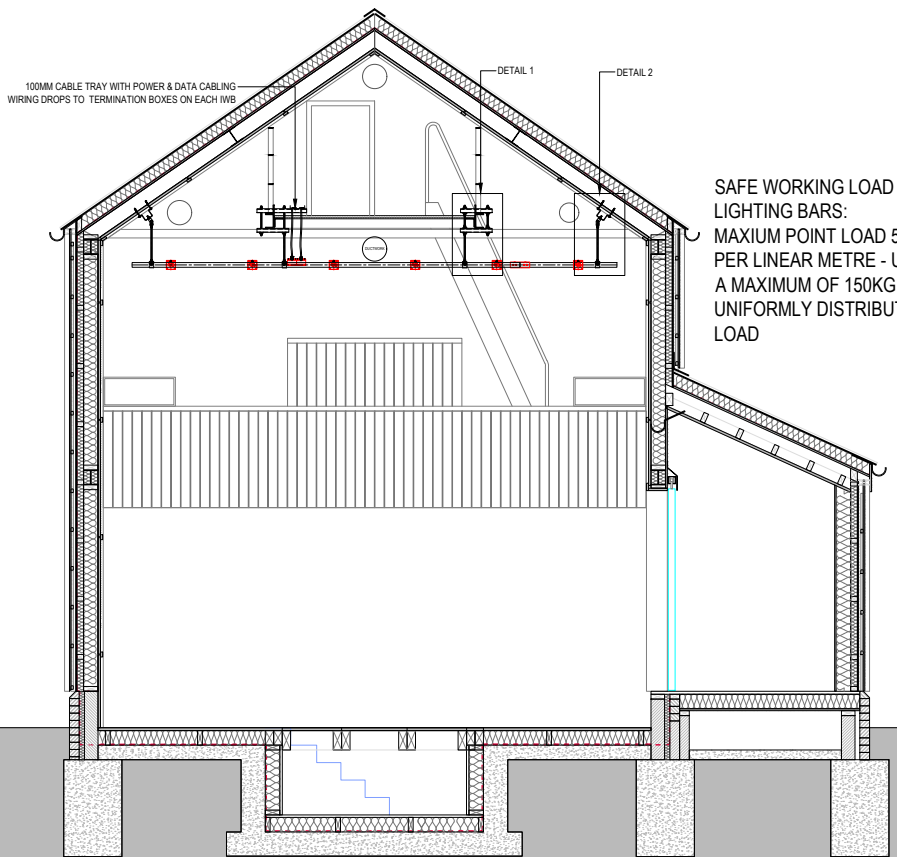


ADD	11.07.2022	AS BUILT ISSUE	K. SAMPHER
CD1	13.05.2022	CONSTRUCTION ISSUE	K. SAMPHER
PD1	08.04.2022	INITIAL ISSUE	K. SAMPHER
Rev	Date	Comments	Operator
REVISION			
DRAWING STATUS: <b>AS FITTED</b>			
CLIENT: <b>BRIGHT FOUNDATION</b>			
PROJECT: <b>RODGERS FARM STAGE LIGHTING &amp; AV FIT OUT</b>			
LOCATION: <b>HASTINGS</b>			
TITLE: <b>LONG SECTION THROUGH THEATRE</b>			
DRAWN: <b>K. SAMPHER</b>	ORGANIZED: <b>K. SAMPHER</b>		
CREATED/ISSUED: <b>08.04.2022</b>	SCALE: <b>Custom</b>		
PROJECT NO. <b>20838-SE-104-1001</b>	FILE NO. <b>-00</b>	SHEET NO. <b>AB01</b>	

**STAGE ELECTRICS**

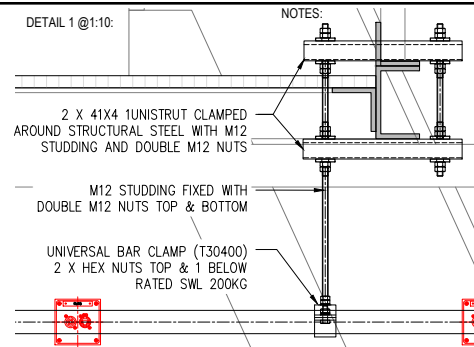
Encore House, Unit 3, Enterprise Road, Patchway, Bristol, BS34 5TA  
 Tel: +44 (0)117 338 4000  
 Copyright 2022 Stage Electrics. All rights reserved. This work may not be further distributed without written consent. All other rights reserved.

[www.stage-electrics.co.uk](http://www.stage-electrics.co.uk)



100MM CABLE TRAY WITH POWER & DATA CABLING  
WIRING DROPS TO TERMINATION BOXES ON EACH IWB

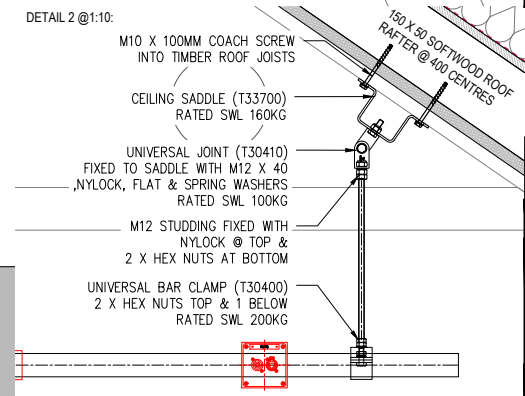
SAFE WORKING LOAD OF LIGHTING BARS:  
MAXIMUM POINT LOAD 50KG PER LINEAR METRE - UP TO A MAXIMUM OF 150KG UNIFORMLY DISTRIBUTED LOAD



2 X 41X41 UNISTRUT CLAMPED AROUND STRUCTURAL STEEL WITH M12 STUDDING AND DOUBLE M12 NUTS

M12 STUDDING FIXED WITH DOUBLE M12 NUTS TOP & BOTTOM

UNIVERSAL BAR CLAMP (T30400) 2 X HEX NUTS TOP & 1 BELOW RATED SWL 200KG



DETAIL 2 @ 1:10:

M10 X 100MM COACH SCREW INTO TIMBER ROOF JOISTS

CEILING SADDLE (T33700) RATED SWL 160KG

UNIVERSAL JOINT (T30410) FIXED TO SADDLE WITH M12 X 40 NYLOCK, FLAT & SPRING WASHERS RATED SWL 100KG

M12 STUDDING FIXED WITH NYLOCK @ TOP & 2 X HEX NUTS AT BOTTOM

UNIVERSAL BAR CLAMP (T30400) 2 X HEX NUTS TOP & 1 BELOW RATED SWL 200KG

NOTES:

<b>DO NOT SCALE</b>		SHEET SIZE <b>A3</b>
KEYPLAN		
DRAWING REFERENCES		
Dwg No.	Rev	Title
1234-5678-9012	1	GRID
LEGEND		

Rev	Date	Comments	Operator
AB01	11.07.2022	AS BUILT ISSUE	K. SAMPHER
CD1	13.05.2022	CONSTRUCTION ISSUE	K. SAMPHER
PD1	10.04.2022	INITIAL ISSUE	K. SAMPHER

REVISION

AS FITTED

BRIGHT FOUNDATION

PROJECT: RODGERS FARM STAGE LIGHTING & AV FIT OUT

LOCATION: HASTINGS

TITLE: SHORT SECTION THROUGH THEATRE

DRAWN: K. SAMPHER ORGANIZED: K. SAMPHER

CREATED/DATE: 10.04.2022 SCALE: 1:50

PROJECT NO. COMPANY TYPE FILE NO. SHEET NO. / REVISION  
20838-SE-104-1101-00 | AB01

Encore House, Unit 3, Enterprise Road, Pottersbury, Bristol, BS34 5TA  
Tel: +44 (0)117 328 4000  
Copyright © 2022 Stage Electrics. All rights reserved. This work may not be further distributed without written consent from Stage Electrics.  
www.stage-electrics.co.uk



## Key Contacts

### **Polly Risbridger**

Chief Executive Officer

[polly.risbridger@thebrightfoundation.org.uk](mailto:polly.risbridger@thebrightfoundation.org.uk)

07590 984694

### **Alison Roberts**

Operations Coordinator

[alison.roberts@thebrightfoundation.org](mailto:alison.roberts@thebrightfoundation.org)

01424 559020

[www.thebrightfoundation.org.uk](http://www.thebrightfoundation.org.uk)

### **The Bright Foundation**

#### **Barn Theatre and Museum**

Rodgers Farm, Stonestile Lane, Hastings, East Sussex, TN35 4PH

### **Registered address:**

#### **Benbow Arts Space**

2 London Road, St Leonards-on-Sea, East Sussex, TN37 6AE

**Registered Charity No.1179452**

